

II PROFILI SRL



COBRATM

**CURVING PROFILES
&
CONCAVE and CONVEX
CURVING STUDS 60x27mm**



COMPANY

The company **I PROFILI SRL** opened in 2011, after many years of experience gained in drywall installation and interior and exterior finishes. It specializes in the production of zinc-coated steel curving profiles, necessary in drywall installations.

I Profili invented and patented a brand new product, with practical and attractive results. The **COBRA™ CURVING PROFILE** offers a completely flexible solution for all design and building purposes. It has totally revolutionized the construction of curved partition walls, curved wall linings, cylindrical columns, curved false ceilings, curved or inclined ribs, barrel and cross vaults, arches, circles, S-shaped walls etc.

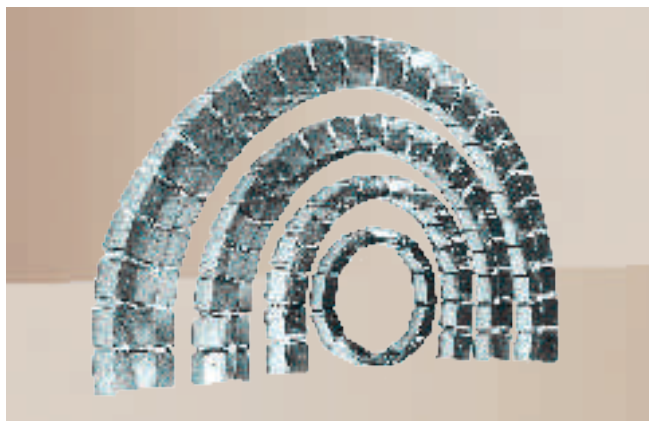


Patented COBRA™ CURVING PROFILE

The **COBRA™ CURVING PROFILE** was invented to satisfy the creative and sophisticated needs of architects, designers, interior designers and designers of curved partition walls and ceilings.

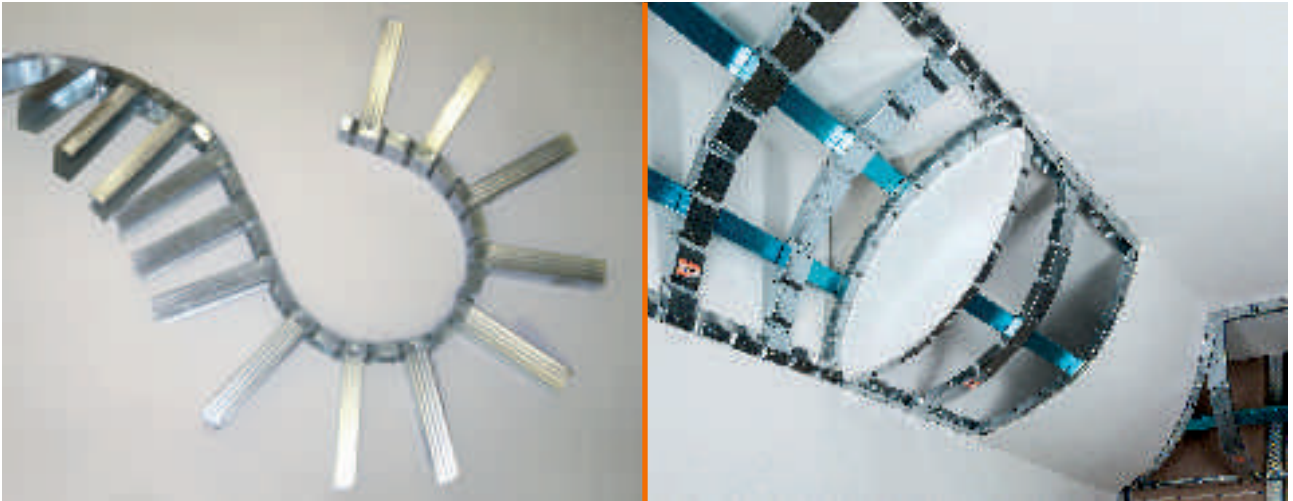
It is the result of an attentive study and accurate realization, which has required years of research and development before arriving at the patent stage and certified EN 14195.

The **COBRA™ CURVING PROFILE** is made of zinc-coated steel, with a thickness of 0,6 mm. It is produced in accordance to the standard EN 10346 and EN 10143 and is available in 5 dimensions (width x length):



- 28 mm x 3000 mm
- 50 mm x 3000 mm
- 70 mm x 3000 mm
- 75 mm x 3000 mm
- 100 mm x 3000 mm

Advantages of the COBRA™ CURVING PROFILE



The **COBRA™ CURVING PROFILE** can create curves of various radii within the same curve, such as in arches, semicircles, S-shaped curves etc.

The **COBRA™ CURVING PROFILE** is extremely flexible and can easily be fixed by just one person.



Whether on the floor or on the ceiling, once bent to the required shape (in any direction) by hand, the **COBRA™ CURVING PROFILE** maintains its curvature **without the need of additional fixing tools or materials.**



Fixing the **COBRA™ CURVING PROFILE** onto the main structure can easily be done by one person, with a great **reduction in labour costs.**



The vertical studs slide very easily into the COBRA™ CURVING PROFILE and once in the required position, they will **automatically be blocked and will remain perfectly upright.**



As the steel sheeting has no gaps on the sides, the screws will always find **secure fixing points.**



COBRA™ CURVING PROFILE can easily and safely be fixed to **any construction angle**, such as coneshaped walls, inclined ceilings etc..

COBRA™ CURVING PROFILE means **reduced construction time** of curved structures and reduced labour costs.

PARTITION WALLS

With the new **COBRA™ CURVING PROFILE**, it is easy to create **CURVED PARTITION WALLS** with varying radii in the same curve of arches, semicircles, S-shaped curves, rounded or arched recesses, and even onto curved walls.



The advantages of the new **COBRA™ CURVING PROFILE**, in comparison to existing products available on the market, are the following:

- The vertical studs slide perfectly into the curved profile;
- The curving profile can be easily bent by hand, in all directions;
- Once bent to the required shape, the **COBRA™ CURVING PROFILE** maintains its curvature without the need of additional fixing tools or materials;
- As the steel sheeting has no gaps on the sides, the screws will always find secure fixing points;
- It is extremely flexible and can be fixed by just one person, with a considerable saving in labour costs;
- Rounded or arched recesses, even on curved partition walls, can be easily carried out.

COBRA™ CURVING PROFILE dimensions available for partition walls:

HEIGHT	WIDTH	LENGTH
30 mm	28 mm	3000 mm
40 mm	50 mm	3000 mm
40 mm	70 mm	3000 mm
40 mm	75 mm	3000 mm
40 mm	100 mm	3000 mm

WALL LININGS

With the new **COBRA™ CURVING PROFILE**, it is possible to create **CURVED WALL LININGS**.



The advantages of the new **COBRA™ CURVING PROFILE**, in comparison to existing products available on the market, are the following:

- The vertical studs slide perfectly into the curved profile;
- The curving profile can be easily bent by hand, in all directions;
- Once bent to the required shape, the **COBRA™ CURVING PROFILE** maintains its curvature without the need of additional fixing tools or materials;
- As the steel sheeting has no gaps on the sides, the screws will always find secure fixing points;
- It is extremely flexible and can be fixed by just one person, with a considerable saving in labour costs;
- Rounded or arched recesses, even on curved wall linings, can be easily carried out.

COBRA™ CURVING PROFILE dimensions available for wall linings:

HEIGHT	WIDTH	LENGTH
30 mm	28 mm	3000 mm
40 mm	50 mm	3000 mm
40 mm	70 mm	3000 mm
40 mm	75 mm	3000 mm
40 mm	100 mm	3000 mm



CURVING STUDS 60X27mm

COBRA™
CONCAVE AND CONVEX



CONCAVE

CONVEX

FALSE CEILINGS



With the **COBRA™ CURVING PROFILE** and the **CURVING STUDS CONCAV AND CONVEX**, it is possible to create various types of perimeters for false ceilings, such as arches at various angles, barrel and cross vaults, arches, cones, domes etc..

- Once bent to the required shape, the COBRA™ CURVING PROFILE maintains its curvature without the need of additional fixing tools or materials;
- The curving profile can be easily bent by hand, in all directions;
- It is extremely flexible and can be fixed by just one person, with a considerable saving in labour costs;

COBRA™ CURVING PROFILE dimensions available for curved false ceilings:

HEIGHT

WIDTH

LENGTH

30 mm

28 mm

3000 mm

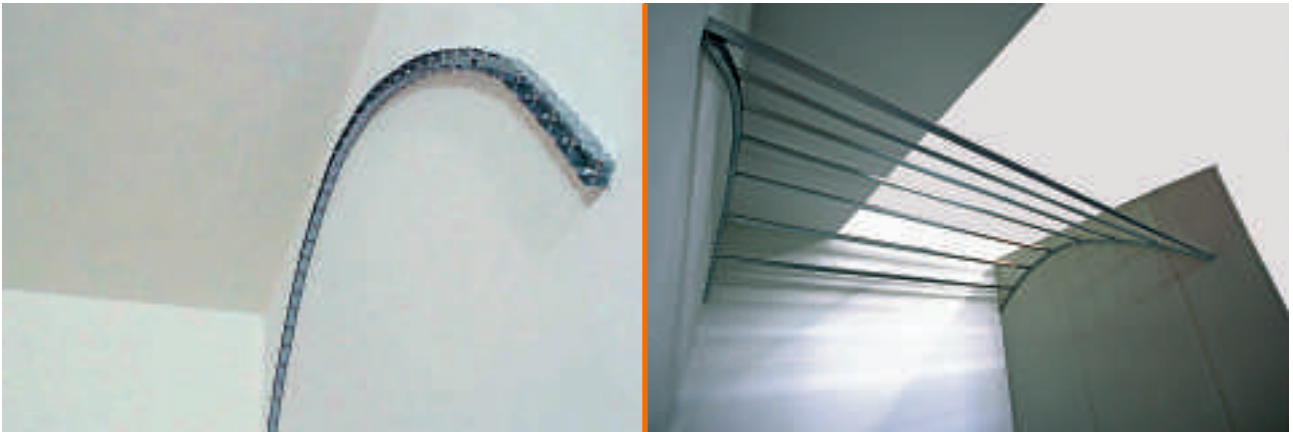


Patented CURVING STUDS

The **CONCAVE CURVING STUD 60x27mm** was invented to satisfy the creative and sophisticated needs of architects, designers, interior designers and designers of curved false ceilings. It is the result of an attentive study and accurate realization, which has required years of research and development before arriving at the patent stage and certified EN 13964.

The **CONCAVE CURVING STUD 60x27mm** is made of zinc-coated steel, with a thickness of 0.6 mm. It is produced in accordance to the standard EN 10346 and EN 10143.

Construction stages:



COBRA™ Curving Profile 28x3000mm fixed to the wall. 50x27 or 60x27mm Stud for framework

Advantages of CONCAVE CURVING STUD 60x27mm

The **CONCAVE CURVING STUD 60x27mm** can easily be bent by hand by just one person. Its structure can create, **with great ease, curved false ceilings**, domes, barrel vaults, rib vaults, waves, cambered ceilings etc. The structures are built with a double metal framework, using perpendicular hooks (similar to those normally used for the construction of a flat false ceiling).



Bending system.

Fixing with perpendicular hooks.

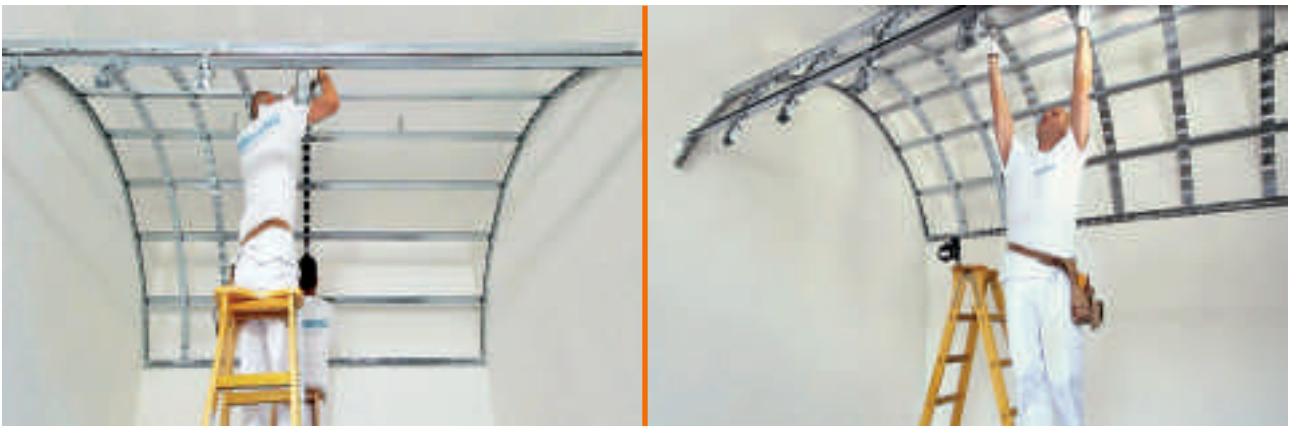
Advantages of **CONCAVE CURVING STUD 60x27mm**

Once the **CONCAVE CURVING STUD 60x27mm** has been bent into the required shape, it maintains its curvature without the need of additional fixing tools or materials.

For wall to wall connection, just insert the Curving Stud into a 28x30mm **COBRA™** Curving Profile, which has been bent at the appropriate angle. The fixing to the structural element can be done by just one person, thereby considerably reducing labour costs.



The **CONCAVE CURVING STUD 60x27mm** guarantees perfect stability of the curved framework, and the time necessary is equal to that of the construction of a normal false ceiling.



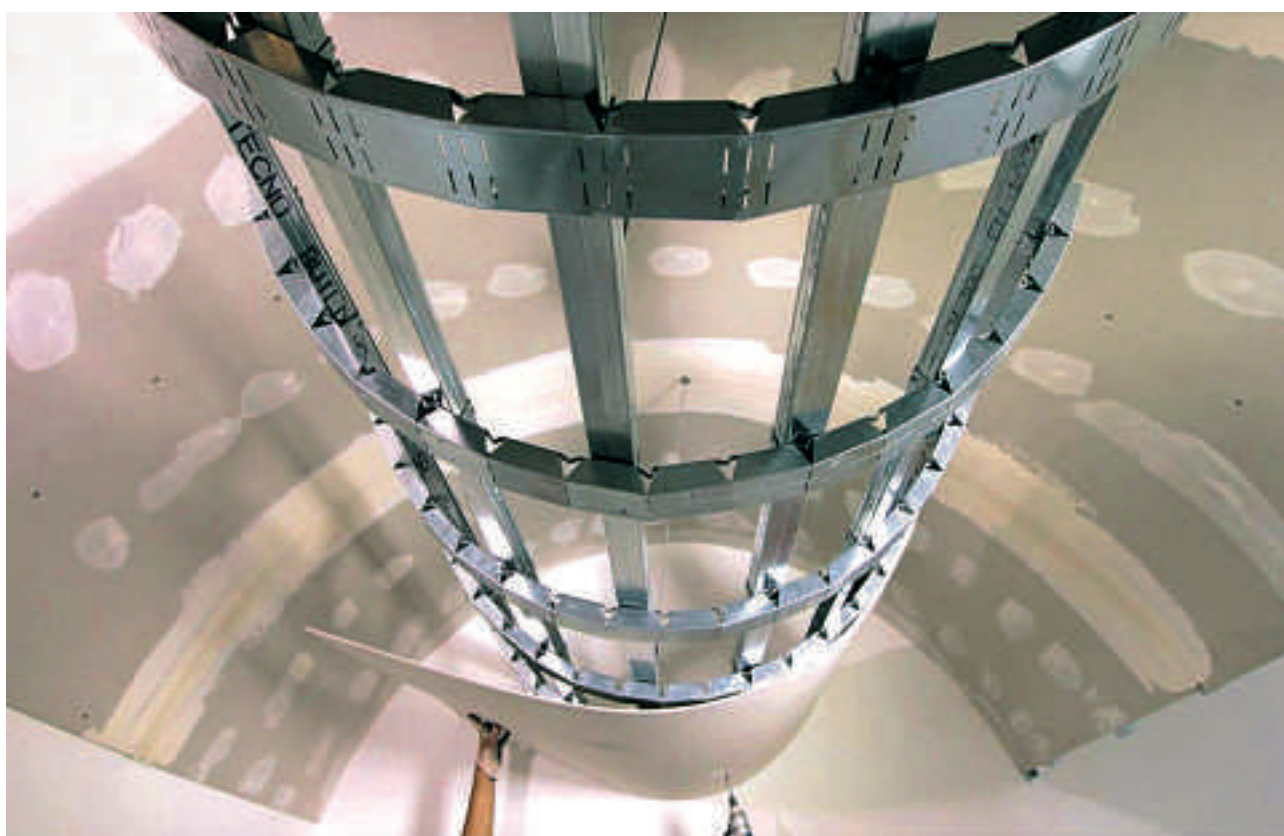
Due to the particular structure of the **CONCAVE CURVING STUD 60x27mm**, the screws will always find secure fixing points.

Patented **CONVEX CURVING STUD 60x27 mm**

The **CONVEX CURVING STUD 60x27mm** is made of zinc-coated steel, with a thickness of 0.6 mm. It is produced in accordance to the standard EN 10346 and EN 10143.



COBRA™ Curving Profile 28x3000mm fixed to the wall. 50x27 or 60x27mm Stud for framework.



The use of the **CONVEX CURVING STUD 60x27 mm** reduces the installation time of all the curved structures with a considerable reduction in labour costs.

Furthermore, because of its pliable structure, it is possible to use a single plasterboard, with a thickness of 0.6mm, to obtain a perfect curvature.

Advantages of CONVEX CURVING STUD 60x27 mm

The **CONVEX CURVING STUD 60x27 mm** structure can create, with great ease, curved false ceilings, curves, rib vaults, waves, cambered ceilings etc. The structures are built with a double metal frame work, using perpendicular hooks (similar to those normally used for the construction of a flat false ceiling).

Due to the particular structure, the **CONVEX CURVING STUD 60x27mm** can easily be bent on any supporting base to flex the double steel sheet.



Once the **CONVEX CURVING STUD 60x27 mm** has been bent into the required shape, it maintains its curvature without the need of additional fixing tools or materials.

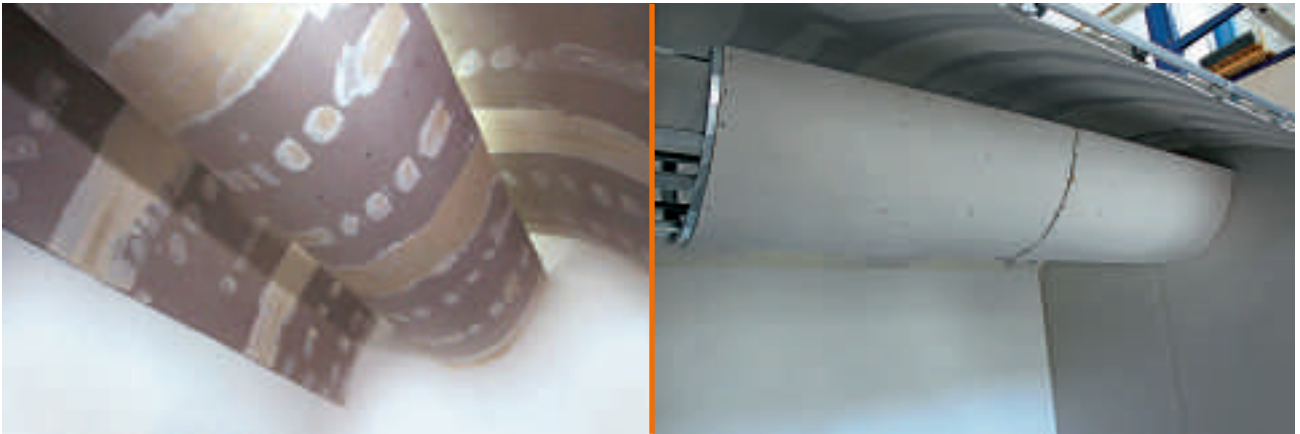
For wall to wall connection, just insert the Curving Stud into a 28x30 mm Cobra™ Curving Profile, which has been bent at the appropriate angle. The fixing to the structural element can be done by just one person, thereby considerably **reducing labour costs**.



Due to the particular structure of the **CONVEX CURVING STUD 60x27 mm**, the screws will always find secure fixing points.

As the steel sheeting has no gaps on the sides, the screws will always find secure fixing points.

The use of the **CONVEX CURVING STUD 60x27mm** reduces the construction time of all the curved structures with a considerable reduction in labour costs. Furthermore, because of its pliable structure, it is possible to use a single plasterboard, with a thickness of 0.6mm, to obtain a perfect curvature.



With the **CONVEX CURVING STUD 60x27 mm**, it is possible to create, with great ease, various types of false ceilings with any curve and radius.

The advantages of the new **CONCAVE AND CONVEX CURVING STUD 60X27mm** are the following:

- Any type of false ceiling can be built without the need of other types of rigid profiles (for example pre-curved or pre-punched);
- The **CONCAVE CURVING STUD** can be easily bent by hand;
- The **CONVEX CURVING STUD** can be easily bent on a supporting base;
- They maintain their curvature without the need of additional fixing tools or materials;
- As the steel sheeting has no gaps on the sides where the plasterboard is fixed, the screws will always find secure fixing points;
- The fixing to the structural element can be done by **just one person**, thereby considerably reducing labour costs.

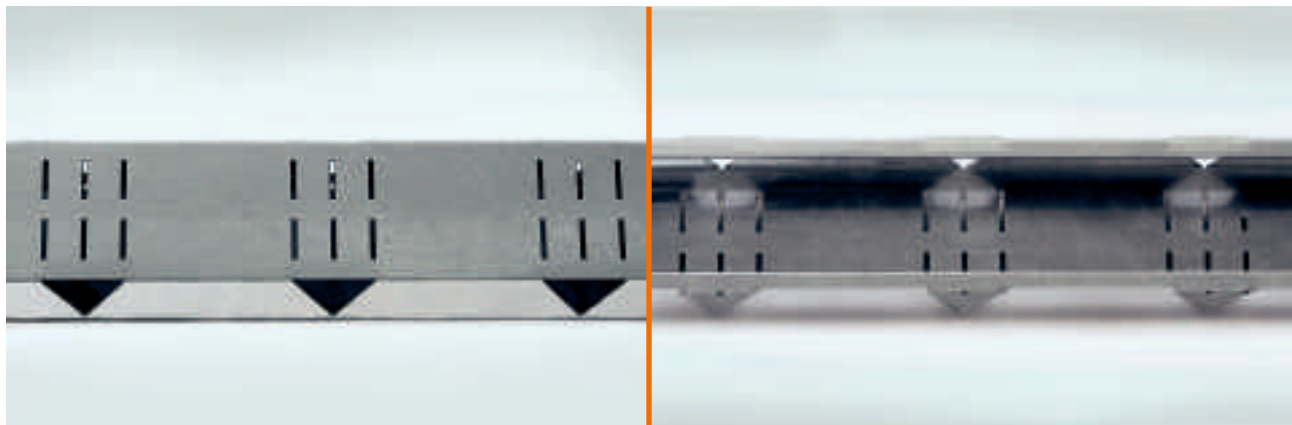


With the complete range of **COBRA™ CURVING PROFILE + CONCAVE AND CONVEX CURVING STUD 60x27mm**, the most sophisticated and creative requirements of architects, designers and interior decorators will most certainly be met.

By using the **COBRA™ CURVING PROFILE**, any wall or wall lining of various radii can be obtained:

- With a curving profile of **28 mm** you can obtain a minimum radius of **100 mm**;
- With a curving profile of **50 mm** you can obtain a minimum radius of **200 mm**;
- With a curving profile of **70 mm** you can obtain a minimum radius of **300 mm**;
- With a curving profile of **75 mm** you can obtain a minimum radius of **300 mm**;
- With a curving profile of **100 mm** you can obtain a minimum radius of **450 mm**.

With the **CONCAVE AND CONVEX CURVING STUD 60x27 mm**, any type of false ceiling can be created: wavy, barrel or crossed etc. The radius can be traced out by using the **COBRA™ CURVING PROFILES**, which can mark the beginning and the end of the curve, thereby simplifying and completing the fixture of the plasterboards.



CONCAVE

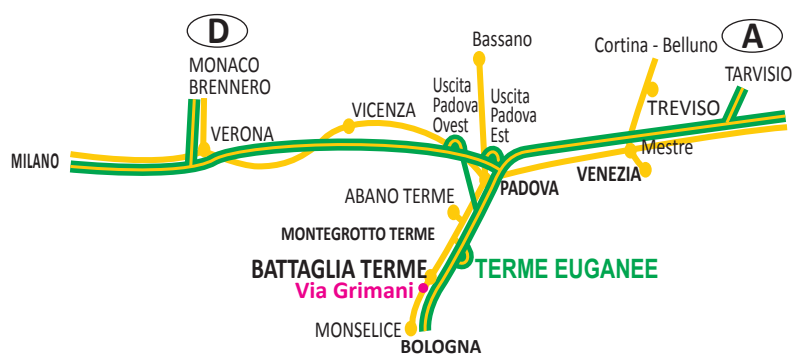
CONVEX

Dimensions of **CONCAVE and CONVEX CURVING STUD 60x27mm**

HEIGHT	WIDTH	LENGTH
27 mm	60 mm	3000 mm

The products of **COBRA™ CURVING PROFILE + CONCAVE AND CONVEX CURVING STUD 60x27 mm**, are certified in accordance with the standards EN 14195 and EN 13964.

The company I PROFILI SRL declines any responsibility for the failure to respect the correct distances between the suspended structures (framework) and/or hangers (fixing elements to the main structure) in relation to the weight loads hung (coverings and other kinds of loads).



II PROFILI SRL

Via Grimani, 10/3 - 35041 BATTAGLIA TERME (Padova) Italy
 Tel. +39 049 9100424 - Fax +39 049 7383199
 info@iprofilii.com - www.iprofilii.com
 P.I.: 04532250281